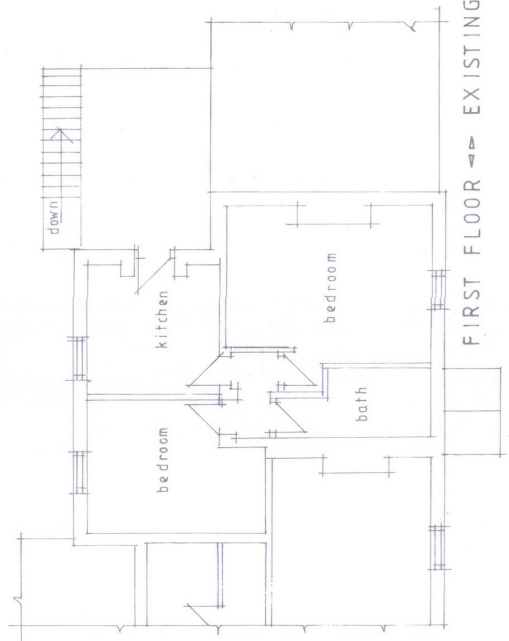


THIS COPY HAS BEEN MADE BY OR WITH THE PERMISSION OF BRISTOL CITY COUNCIL PURSUANT TO SECTION 22 OF THE COPYRIGHT, DESIGNS AND PATENTS ACT 1988. UNLESS THAT ACT PROVIDES A RELEVANT EXCEPTION TO COPYRIGHT, THE COPY MUST BE COPIED WITHOUT THE PERMISSION OF THE COPYRIGHT OWNER.

GROUND FLOOR → EXISTING



FIRST FLOOR → EXISTING

CHANGE OF USE OF FORMER  
PUBLIC HOUSE TO FORM  
4 BEDROOM HOUSE  
FORMER SCHOOL HOUSE INN  
LOW MARISHES

SCALE 1:100

RYEDALE DM

19 MAR 2013

DEVELOPMENT  
MANAGEMENT

13/00337/12